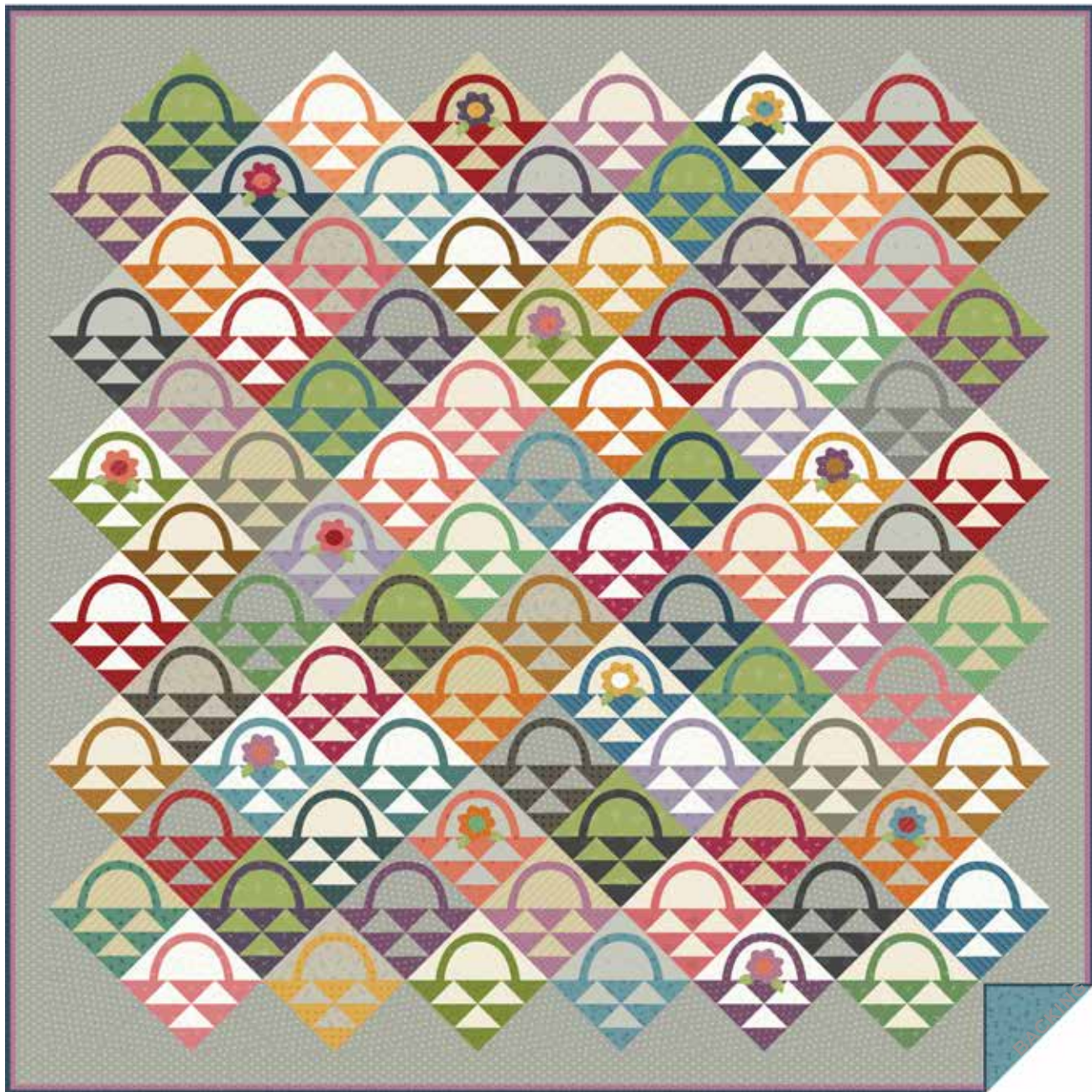


# Itsy Bits

RENÉE NANNEMAN



Bitsy Baskets Quilt designed by: **Renée Nanneman**

Quilt Size: **48" x 48"** • Skill Level: **Intermediate**



Free Pattern Download Available

1384 Broadway, 24th Floor, New York, NY 10018

Tel. (800) 223-5678 • [andoverfabrics.com](http://andoverfabrics.com)

8/1/24

# Bitsy Baskets Quilt

Introducing Andover Fabrics new collection:  
**ITSY BITS** by Renée Nanneman  
Quilt designed by Renée Nanneman

Quilt finishes 48" x 48" • 84 Blocks: 4½" x 4½"

*Mini-basket blocks make up this charming wall quilt. Follow the diagrams to make this quilt, or choose your own combinations for the baskets and backgrounds. The appliquéd posies add a whimsical touch.*

## Cutting Directions

**Note:** Read assembly directions before cutting patches.

All measurements are cut sizes and include ¼" seam allowances. A fat ⅛ is a 9" x 20"-22" cut of fabric. A fat ¼ is an 18" x 20"-22" cut. Borders are cut the exact lengths required plus ¼" seam allowances. WOF designates the width of fabric from selvedge to selvedge (approximately 42" wide).

*You can cut patches for 1-4 blocks from each fat ⅛ of the Basket colors. Follow the list below to make the number of blocks indicated, or feel free to make the number you wish of different combinations. Save leftover triangles and HST.*

### Cutting for ONE Block:

#### Neutral Background:

Cut (1) square 5⅜", cut in half diagonally to make 2 half-square triangles (one triangle is leftover for another block that uses the same neutral fabric)  
Cut (2) squares 2½" (or 2⅜") for HST (1 HST is leftover for another project)

#### Basket Color:

Cut (1) handle  
Cut (2) squares 2½" (or 2⅜") for HST (1 HST is leftover for another project)  
Cut (2) squares 2⅜", cut in half diagonally to make 4 half-square triangles (one triangle is leftover for another Basket Block)

### Cutting for ENTIRE Quilt:

#### 28 Colors

Cut patches as needed for the number of baskets indicated in each color.  
4 Baskets: Fabrics 3, 8, 13, 17, 24, 28, 31  
3 Baskets: Fabrics 1, 2, 4, 6, 10, 12, 20, 21, 26, 32, 34, 36  
2 Baskets: Fabrics 9, 14, 18, 23, 25, 33, 35  
1 Basket: Fabrics 15, 29  
Cut (12) flowers from leftovers (number of flowers is optional)

#### Purple (30)

Cut (5) strips 1" x WOF, pieced to make the following:  
(4) flanges 1" x 48½"  
Cut patches for 4 Baskets

## Making the Quilt

**When making the blocks, refer to these labels and the list of fabrics on the last page of the pattern.**

<b>1</b> 1450-G	<b>2</b> 1450-N	<b>3</b> 1450-R	<b>4</b> 1451-C
<b>5</b> 1451-G	<b>6</b> 1451-R	<b>7</b> 1452-C	<b>8</b> 1452-P
<b>9</b> 1452-Y	<b>10</b> 1453-B	<b>11</b> 1453-N	<b>12</b> 1453-R
<b>13</b> 1454-C	<b>14</b> 1454-T	<b>15</b> 1454-Y	<b>16</b> 1455-L
<b>17</b> 1455-O	<b>18</b> 1455-T	<b>19</b> 1456-C	<b>20</b> 1456-N
<b>21</b> 1456-R	<b>22</b> 1457-C	<b>23</b> 1457-O	<b>24</b> 1457-T
<b>25</b> 1458-C	<b>26</b> 1458-G	<b>27</b> 1458-L	<b>28</b> 1459-B
<b>29</b> 1459-C	<b>30</b> 1459-P	<b>31</b> 1460-P	<b>32</b> 1460-R
<b>33</b> 1460-T	<b>34</b> 1461-E	<b>35</b> 1461-G	<b>36</b> 1461-P

### Fabric Requirements

<b>28 colors</b>	baskets	Yardage	Fabric
		fat ⅛ each	
		Fabrics 1-4, 6, 8-10, 12-15, 17-18, 20-21, 23-26, 28-29, 31-36	
<b>Purple</b>	flanges	¼ yard	30
<b>Green</b>	leaves	fat ¼	5
<b>Gray</b>	borders	1½ yards	7
<b>3 neutrals</b>	backgrd.	fat ¼ each	11, 19, 22
<b>2 neutrals</b>	backgrd.	½ yard ea.	16, 27
<b>Binding</b>		⅜ yard	28
<b>Backing</b>		3½ yards	24

### Green (5)

Cut background patches for 9 blocks  
Cut (24) leaves (number is optional)

### Gray (7)

Cut (2) top/bottom borders 2" x 48½"  
Cut (2) side borders 2" x 45½"  
Cut (5) squares 7⅝", cut in half diagonally twice to make 20 quarter-square triangles for setting  
Cut (2) squares 7¼", cut in half diagonally to make 4 half-square triangles for corners  
Cut background patches for 11 blocks

### 3 Neutrals (11, 19, 22)

Cut background patches for 10 blocks from Fabric 11  
Cut background patches for 9 blocks each from Fabric 19  
Cut background patches for 7 blocks from Fabric 22

### 2 Neutrals (16, 27)

Cut background patches for 19 blocks from Fabric 16  
Cut background patches for 19 blocks from Fabric 27

### Binding

Cut (5) strips 2½" x WOF for binding

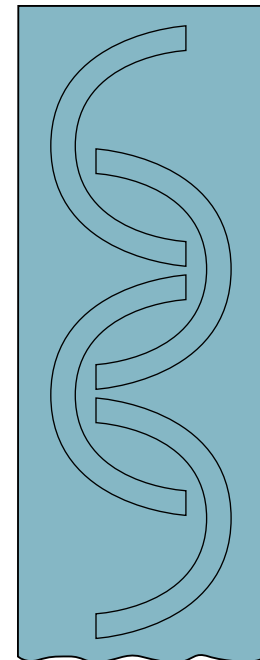
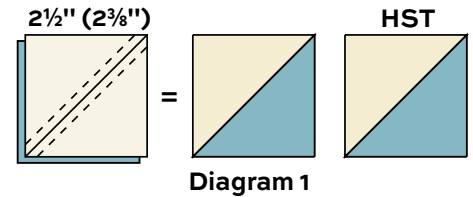
### Backing

Cut (2) lengths 30" x 58", pieced to fit quilt top with overlap on all sides

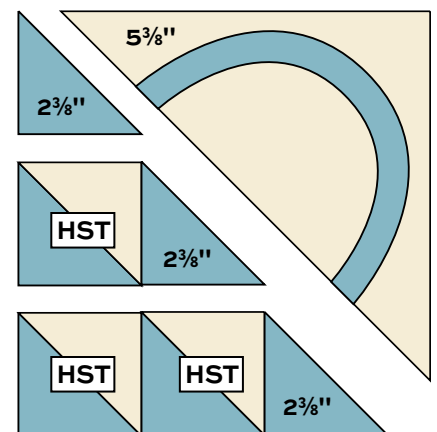
# Bitsy Baskets Quilt

## Making the Quilt

1. The basket fabrics are joined with the neutral fabrics in 84 different combinations (no 2 blocks are alike), as designated on the Quilt Assembly. We suggest that you photocopy the Quilt Assembly diagram and mark off each block as you make it, if you plan to follow the quilt exactly. Refer to the cutting lists above to determine how many patches to cut of each fabric. Each fat  $\frac{1}{8}$  yardage is enough to make up to 4 baskets. Feel free to change the combinations of basket and background fabrics.
2. Part of each basket block is made with half-square triangles (HST). Use your favorite method to make HST that finish  $1\frac{1}{2}$ ", or follow these directions. Fabric squares cut  $2\frac{1}{2}$ " will be trimmed after stitching. Cut the squares  $2\frac{3}{8}$ " if you do not wish to trim later. Draw a diagonal line on the wrong side of a lighter background square. With right sides together, position the marked square on top of the colored square. Stitch  $\frac{1}{4}$ " on each side of the diagonal line (Diagram 1). Cut apart on the drawn line. Press the seam allowance toward the darker fabric. Trim the squares to 2". This technique results in 2 HST alike. Repeat this step with the other  $2\frac{1}{2}$ " squares of the same fabrics to make 4 HST alike. The basket requires only 3 HST, so 1 HST is left over from each block. Use these leftovers in another project. Suggestion: A fun pillow that is about 13" square can be made with 81 HST set 9 x 9.
3. Basket handles should be appliquéd to the background triangle before finishing each block. These directions are for fusible appliqué. If you wish to finish the raw edge of the appliqué with machine stitching, use a lightweight fusible webbing. If you do not plan to stitch it, use a heavyweight fusible. On the paper side of the fusible webbing, trace the number of handles needed of each fabric (from 1-4). Cut around each handle loosely. Follow manufacturer's directions to fuse the webbing to the back side of the colored fabric. Cut out along the lines.
4. Remove the paper backing on the handle. Center the handle on the  $5\frac{3}{8}$ " background triangle, aligning the ends of the handle with the raw edge of the triangle. Fuse in place. Stitch along the edges of the handle with a straight or decorative stitch as you wish.
5. Referring to the block diagram, arrange 3 HST and 3 colored  $2\frac{3}{8}$ " triangles in rows as shown. Join the rows. Sew this unit to the long edge of the large triangle with the handle to make a block. The ends of the handle will get caught in the seam. Make 84 blocks.



Cutting Handles



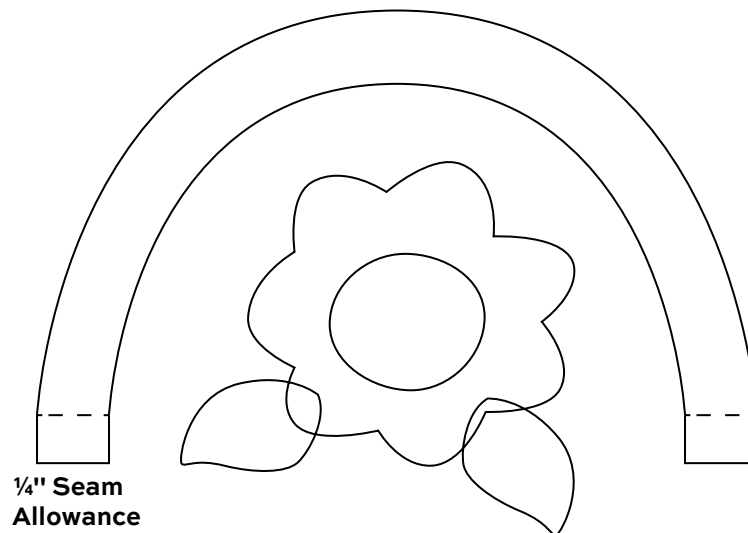
Block - Make 84

# Bitsy Baskets Quilt

- There are 12 flowers (each with 2 leaves) on the quilt. You can appliqué the flowers and leaves on the desired blocks now, or wait until the blocks are joined, and then decide where to place them. Follow Step 3 to prepare the flowers and leaves. Add more flowers and leaves as you wish. Refer to the quilt photograph for placement of the appliqué.
- Refer to the Quilt Assembly. Arrange the 84 blocks in diagonal rows, adding a Fabric 7 quarter-square triangle at each end of all rows. Rotate the triangles as shown. Look through a camera to see if the arrangement is to your liking. Join the baskets and triangles into rows, and then join the rows. Sew a Fabric 7 half-square triangle at each of the corners. Trim the quilt edges if needed, leaving a  $\frac{1}{4}$ " seam allowance beyond the blocks. Appliqué the flowers and leaves if you have not done that already. (See Step 6.)
- Sew shorter borders to the sides of the quilt. Sew longer borders to top and bottom.

## Finishing the Quilt

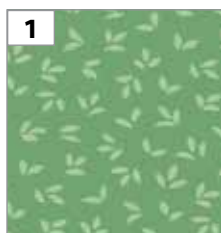
- Layer the quilt with batting and backing and baste. Quilt in the ditch around borders and patches. Quilt around the appliqué, including the handles. Quilt the background side and corner triangles and border as you wish.
- If you choose to add the purple flange to the quilt, follow these directions. Fold the Fabric 30 strips in half lengthwise, right sides facing out. Place a folded strip on the front side of the quilt along one side. Align raw edges of the flange even with the raw edge of the quilt. Baste the flange to the quilt, sewing slightly under  $\frac{1}{4}$ " from the raw edges. Trim ends even with the quilt's top and bottom edges. Add a second flange strip to the opposite side of the quilt and stitch in place. Repeat these steps on the top and bottom of the quilt.
- Bind in the usual manner, sewing the binding to the front side of the quilt. The raw edge of the flange will get caught in the binding. Turn the binding to the back and hand stitch in place.



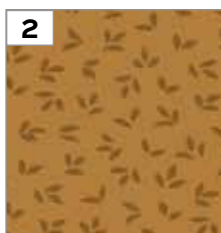
# Bitsy Baskets Quilt



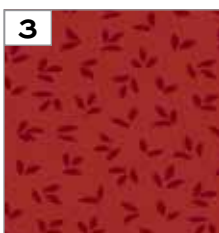
# Itsy Bits RENÉE NANNEMAN



1450-G



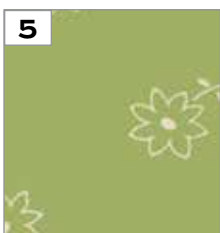
1450-N



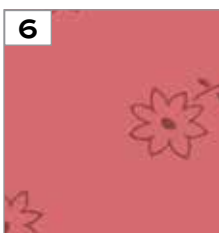
1450-R



1451-C



1451-G



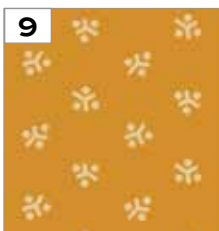
1451-R



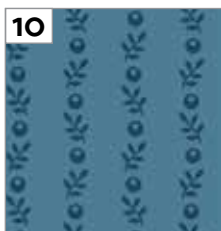
1452-C



1452-P



1452-Y



1453-B



1453-N



1453-R



1454-C



1454-T



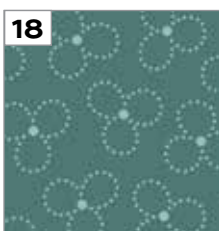
1454-Y



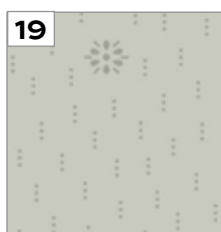
1455-L



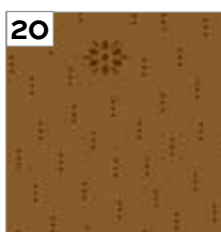
1455-O



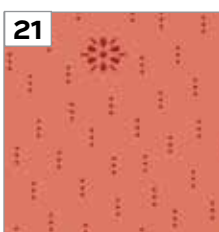
1455-T



1456-C



1456-N



1456-R



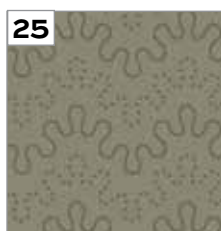
1457-C



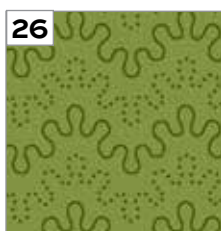
1457-O



1457-T



1458-C



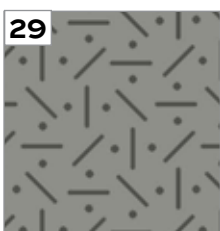
1458-G



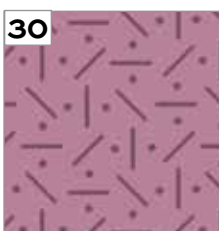
1458-L



1459-B



1459-C



1459-P



1460-P



1460-R



1460-T



1461-E



1461-G



1461-P

All fabrics are used in quilt pattern. Fabrics shown are 100% of actual size.

Free Pattern Download Available

1384 Broadway, 24th Floor, New York, NY 10018

Tel. (800) 223-5678 • [andoverfabrics.com](http://andoverfabrics.com)